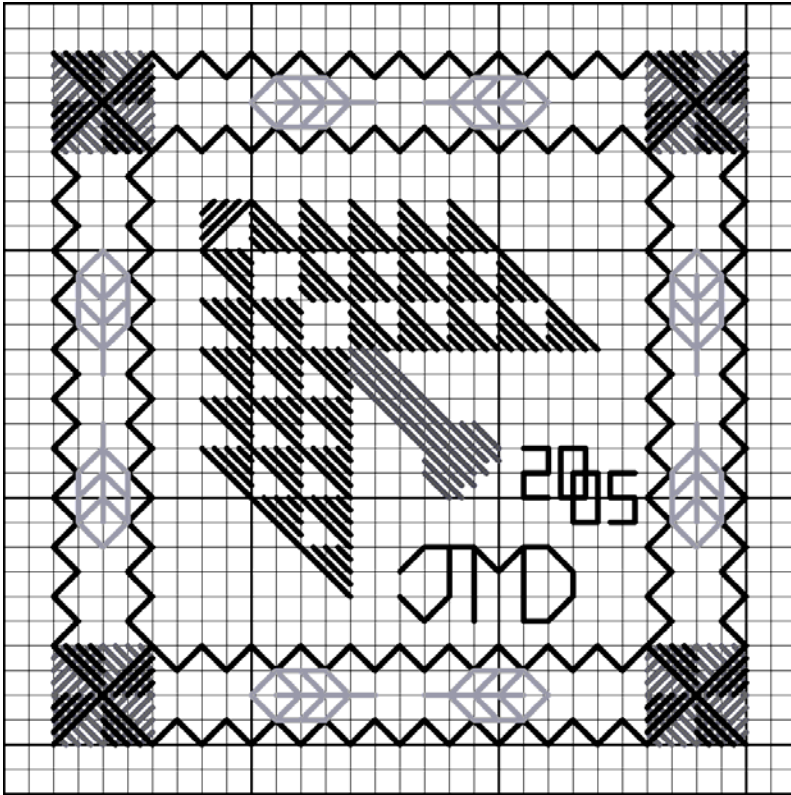


Tree of Life Scissors Fob

Design Size on 28 ct = 2 x 2 "

Design count : 28 x 28



Supplies:

5 X 5" piece of 28 ct. Golden Needle

A funky matching piece of fabric for backing

16" of coordinating ribbon or 1yd twisted cord

Sampler Threads (ST):

Bittersweet(grey leaves in border)

Brandy (scotch stitch right top corner and bottom left corner, Milanese stitch top right corner and bottom right corner)

Forest Glade (wave stitch border)

Maple Syrup (tree trunk & initials)

Mulberry (opposite to brandy see below)

The Thread Gatherer :Silk 'N Colours : 069

Autumn Honey (tree leaves)

Purchased or made twisted cord

Tapestry needle, needle & thread

Copyright © 2005 Jeannette Douglas Designs

This chart may be reproduced and distributed for promotional purposes but may not be sold.

Instructions: For all stitching use 2 strands floss or silk. Refer to stitch diagrams for specialty stitches.

Tree: Start in center of your little square of linen at the right triangle above the tree trunk. Use 2 strands SNC Autumn Honey and follow main diagram for placement of Milanese stitch. Tree trunk is in 2 strands ST Maple Syrup done in long straight satin stitches.

Outer edge: First do the wave stitch around the piece in 2 strands Forest Glade, This will help to place the four corners of your pinwheels. Then you can do your pinwheels as follows. The top left and bottom right hand corners have ST Mulberry under laid first in Scotch stitch, then overlaid with Milanese stitch in ST Brandy. The top right and bottom left hand corners are opposite to this. Therefore your 2 strands ST Brandy is under laid in Scotch stitch first and overlaid with Milanese stitch last in 2 strands ST Mulberry.

Lastly, using 2 strands ST Bittersweet backstitch the leaves in the border. In Maple Syrup 2 strands you may add your initials and year.

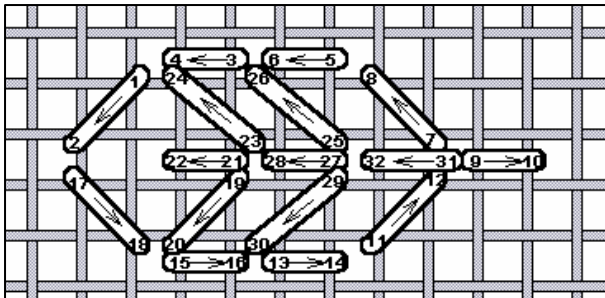
Finishing:

Count out 12 threads from each corner point of design and mark this spot. Put right sides of pattern and material together stitching along the counted out 12 threads, leaving a minimum of 1" open at top left-hand end. Cut excess fabric. Turn right side out. Fold ribbon in half and knot at ends, tuck knot into opening and whip stitch, catching ribbon as you stitch. Leave small opening, fill with rice or polyester filling and continue to whip stitch closed.

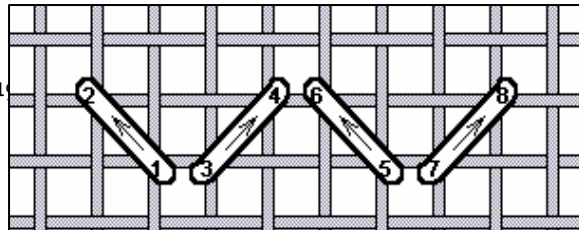
Loop ribbon through scissors

Alternate finishing:

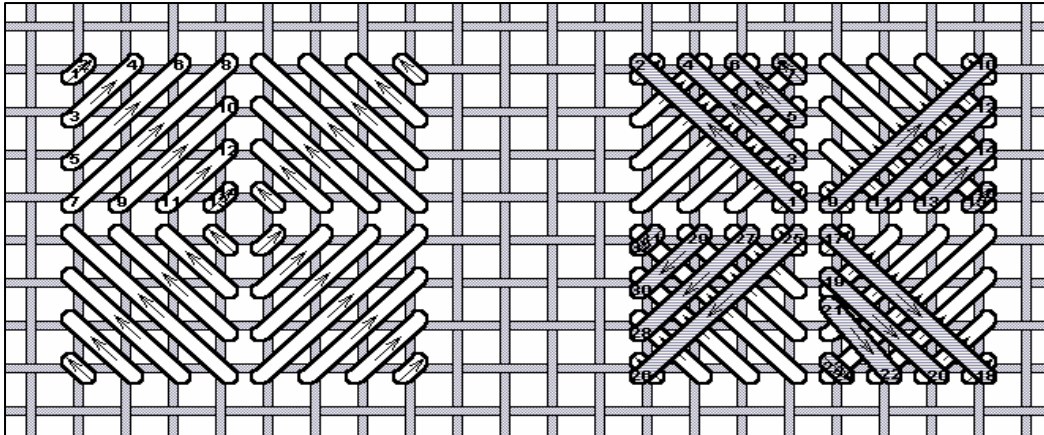
Make twisted cord from Perle Cotton, Hand sew cording around the edge leaving a 6" to 8" length of cord to attach to scissors.



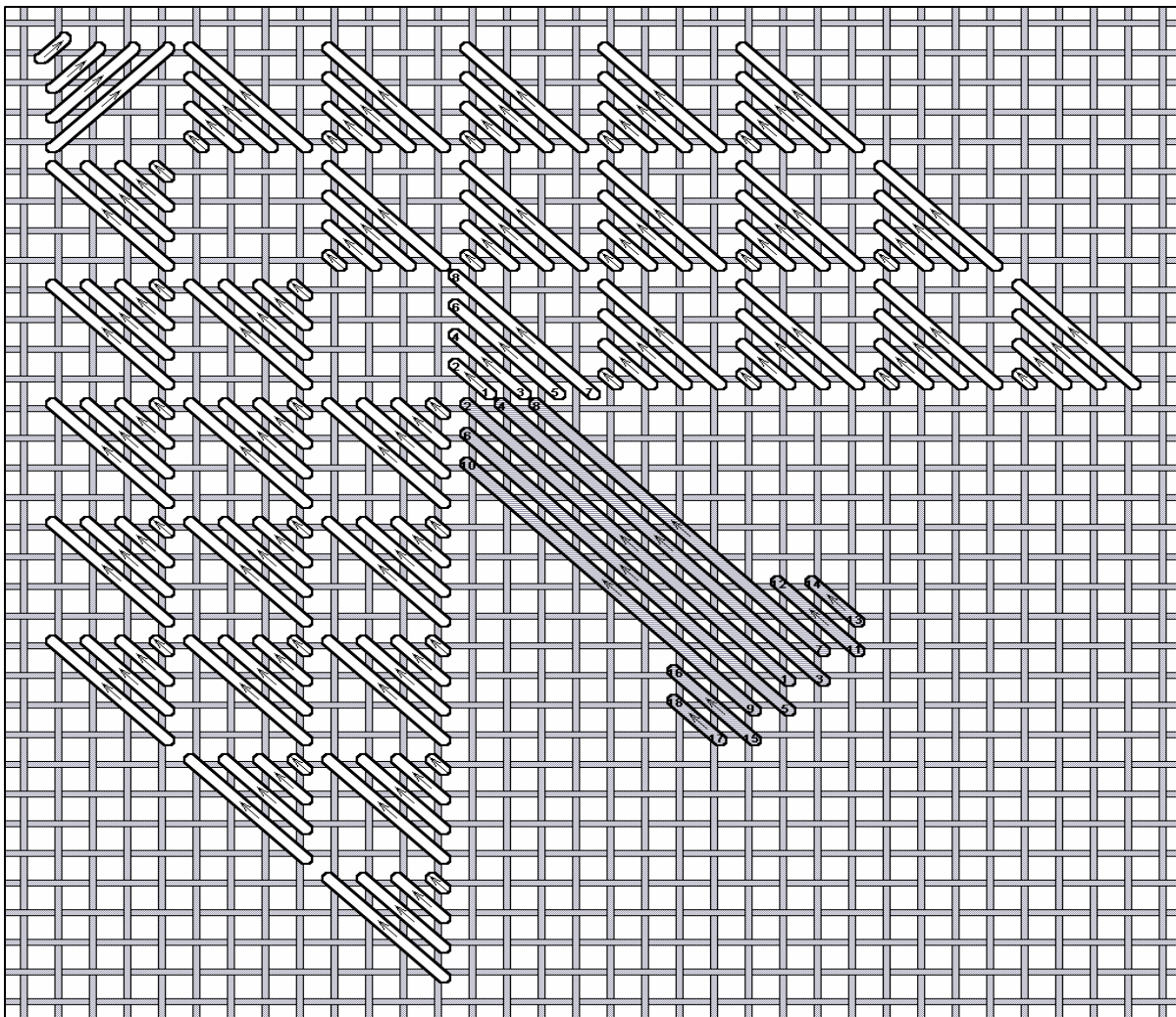
Leaf backstitched in between wave in border



Wave stitch border between pinwheels



Pinwheel corners
- bottom layer is
scotch stitch
(white lines) with
top layer in
Milanese stitch
(gray lines)



Tree of life : Milanese stitch leaves and satin stitch trunk